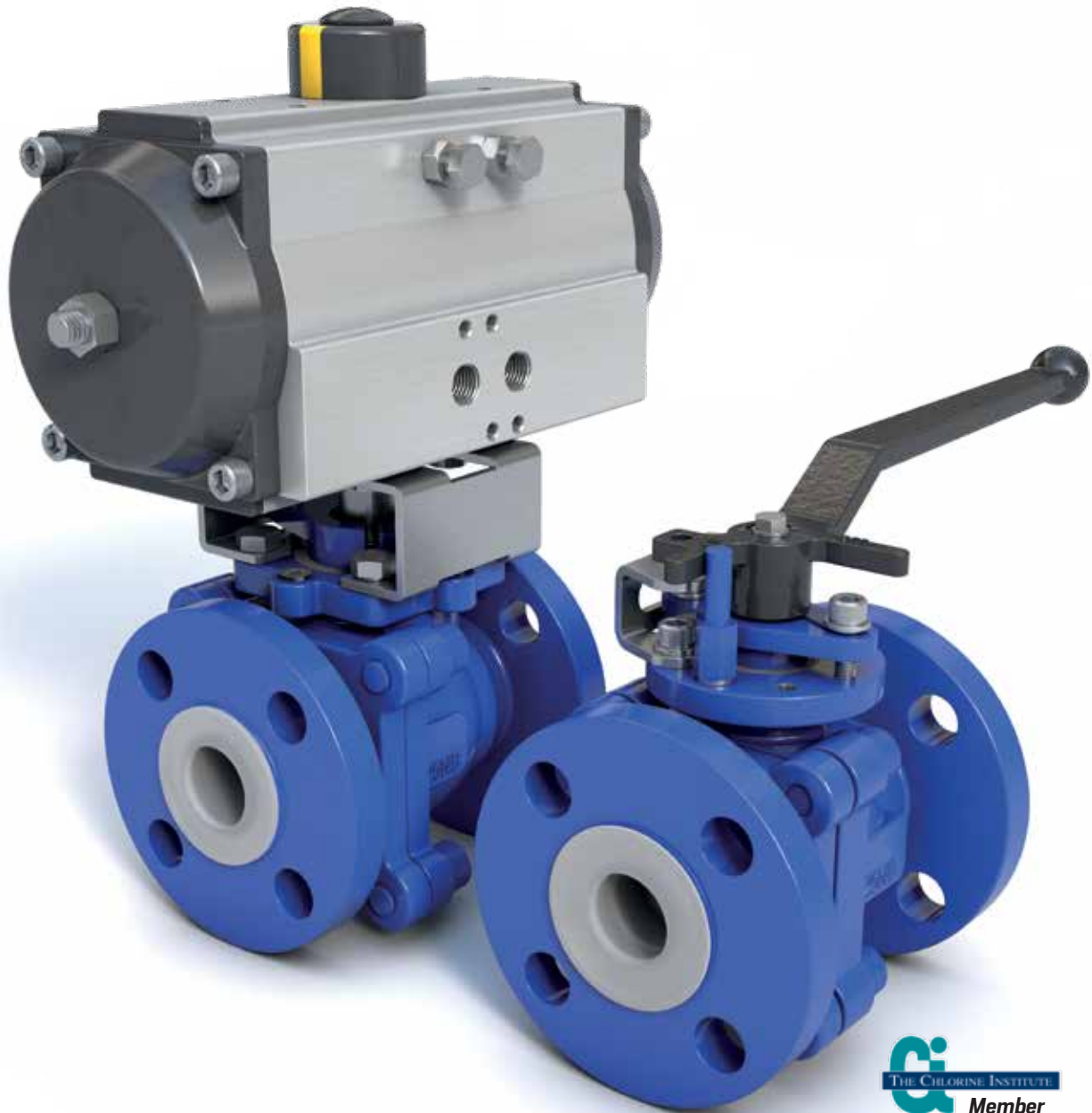


ACRIS®

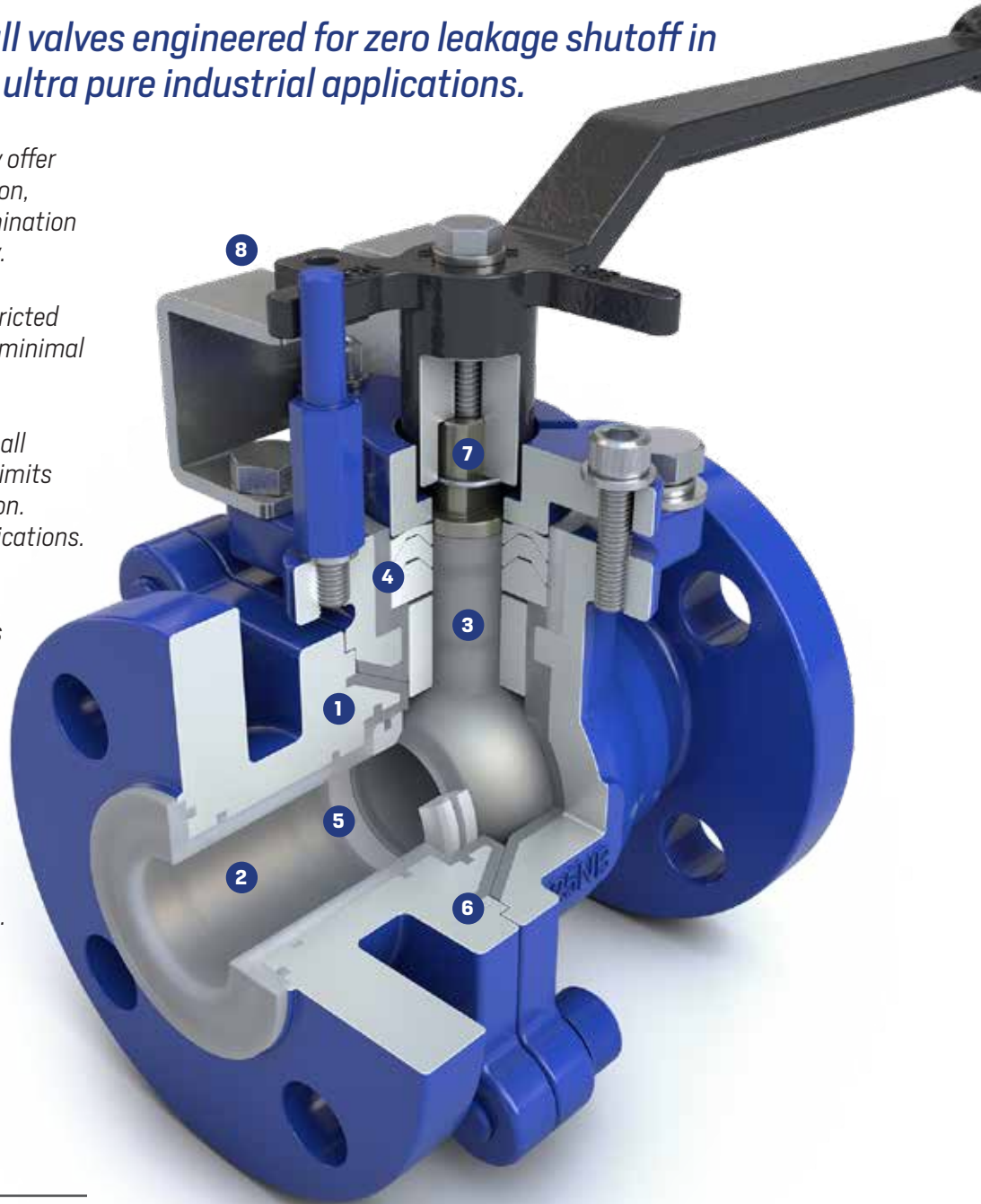
PFA LINED BALL VALVES



Acris® PFA Lined Full Port Ball Valves

Fully PFA lined full port ball valves engineered for zero leakage shutoff in demanding corrosive and ultra pure industrial applications.

- 1 Fully PFA lined ball, stem and body offer unsurpassed resistance to corrosion, permeation and microbial contamination for maximum purity and reliability.
- 2 Full port design ensures an unrestricted flow path for high flow rates with minimal pressure drop.
- 3 Rugged, high strength one piece ball and stem prevents blowouts and limits hysteresis for dependable operation. V-Port ball option for control applications.
- 4 Adjustable PTFE chevron packing eliminates leak paths and reduces fugitive emissions.
- 5 Durable, corrosion resistant TFM seat designed for zero leakage, low torque isolation.
- 6 Metal-to-metal body joints protect the locked-in liner from damage caused by external forces.
- 7 Anti-static grounding device prevents static buildup.
- 8 ISO 5211 top mounting plate for easy actuation.



Material Specifications

Qty.	Description	Material
2	Body Halves	PFA Lined ASTM A-216 WCB PFA Lined ASTM A-351 CF8M (opt.)
1	Ball* & Stem	One Piece 17-4PH, PFA
1	Handle	CS Epoxy Coated
1	Gland Packing	PTFE
2	Seats	TFM
-	Fasteners	B7, (18-8 Optional)
1	Gland Covering	SS 304
1	Lock Out/Tag Out	SS 304
1	Ground Spring	SS 304

*Optional vented ball for chlorine gas service.

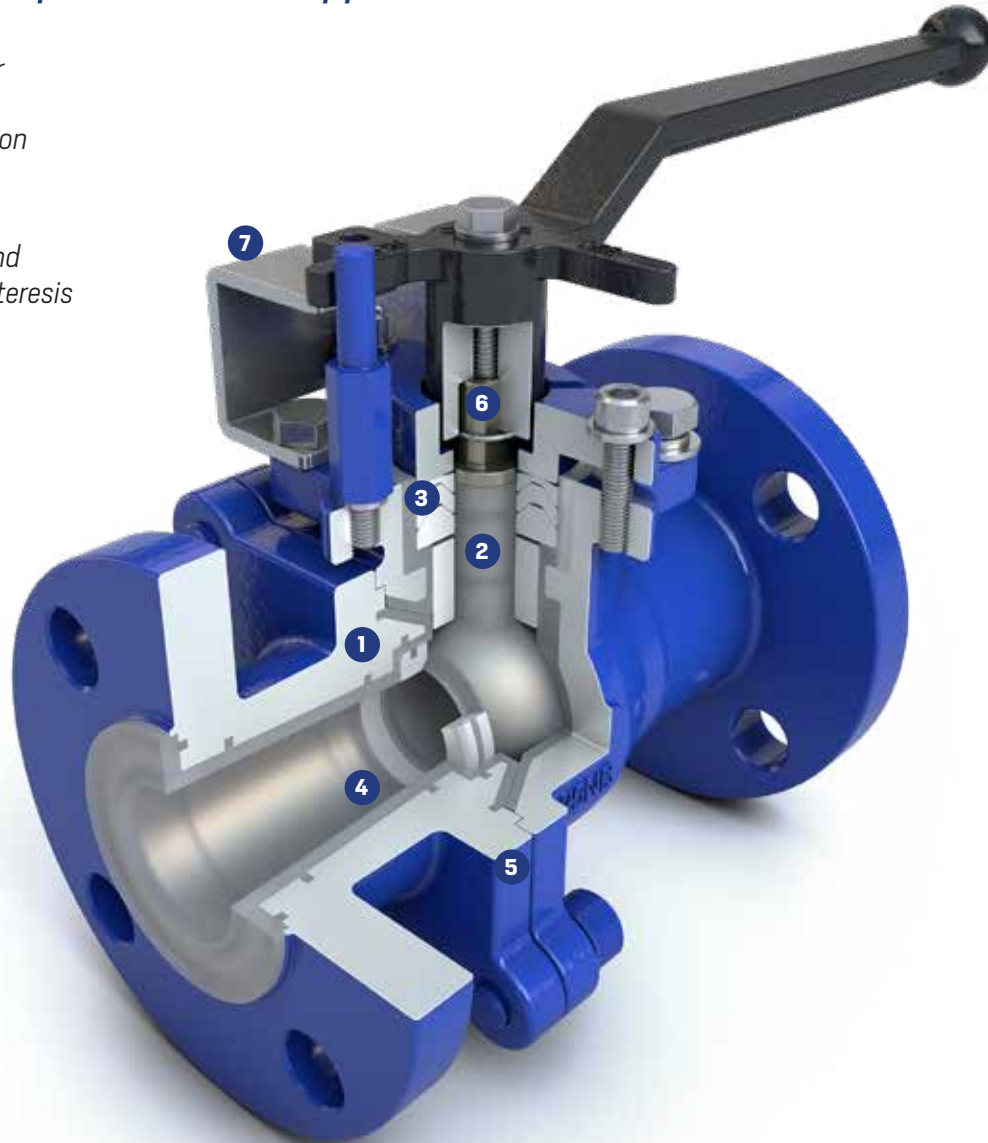
Specifications & Standards

Size Range	1/2" to 8" (15 to 200mm)
Pressure Rating	250psi (17bar) 6" and smaller 150psi (10bar) 8"
Temperature	A216 WCB -20°F to 400°F (-29°C to 204°C) A351 CF8M -49°F to 400°F (-45°C to 204°C)
Body Design	ASME B16.34
Flanges	ASME B16.5 Class 150 RF
Face-to-face	1" to 8" ASME B16.10 1/2" to 3/4" EN558-1

Acris[®] PFA Lined Standard Port Ball Valves

Fully PFA lined standard port ball valves engineered for zero leakage shutoff in demanding corrosive and ultra pure industrial applications.

- 1 Fully PFA lined ball, stem and body offer unsurpassed resistance to corrosion, permeation and microbial contamination for maximum purity and reliability.
- 2 Rugged, high strength one piece ball and stem prevents blowouts and limits hysteresis for dependable operation.
- 3 Adjustable PTFE chevron packing eliminates leak paths and reduces fugitive emissions.
- 4 Durable, corrosion resistant TFM seat designed for zero leakage, low torque isolation.
- 5 Metal-to-metal body joints protect the locked-in liner from damage caused by external forces.
- 6 Anti-static grounding device prevents static buildup.
- 7 ISO 5211 top mounting plate for easy actuation.



Material Specifications

Qty.	Description	Material
2	Body Halves	PFA Lined ASTM A-216 WCB
1	Ball & Stem	One Piece 17-4 PH, PFA
1	Handle	CS Epoxy Coated
1	Gland Packing	PTFE
2	Seats	TFM
-	Fasteners	B7 [18-8 Optional]
1	Gland Covering	SS 304
1	Lock Out/Tag Out	SS 304
1	Ground Spring	SS 304

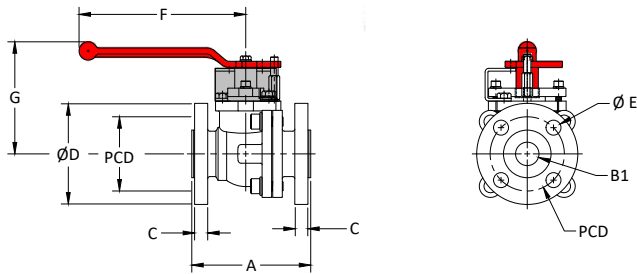
Specifications & Standards

Size Range	1" to 6" (25 to 150mm)
Pressure Rating	250psi (17bar)
Temperature	-20°F to 400°F (-29°C to 204°C)
Body Design	ASME B16.34
Flanges	ASME B16.5 Class 150 RF
Face-to-face	ASME B16.10

Acris Full Port Ball Valve Dimensions

Size [In.]	A	B1	C	ØD	PCD	ØE	F	G	Cv	Torque [lb-in]
1/2	5.12	0.59	0.55	3.50	2.38	0.63	7.00	4.92	15	133
3/4	5.90	0.78	0.55	3.85	2.75	0.63	7.00	4.92	25	177
1	5.00	0.98	0.67	4.25	3.12	0.63	7.00	4.92	50	215
1 1/2	6.50	1.48	0.74	5.00	3.88	0.63	10.00	5.00	185	330
2	7.00	1.97	0.80	6.00	4.75	0.75	10.00	5.60	320	560
3	8.00	3.15	0.98	7.50	6.00	0.75	12.00	7.00	665	865
4	9.00	3.93	0.98	9.00	7.50	0.75	12.00	8.20	1450	1485
6	10.50	5.90	1.10	11.00	9.50	0.88	Gear	Gear	3250	3100
8	18.00	7.87	1.14	13.50	11.75	0.88	Gear	Gear	6025	4820

Dimensions are approximate and subject to change.



Ordering Information

Ball Full Port (One Piece Stem & Ball)

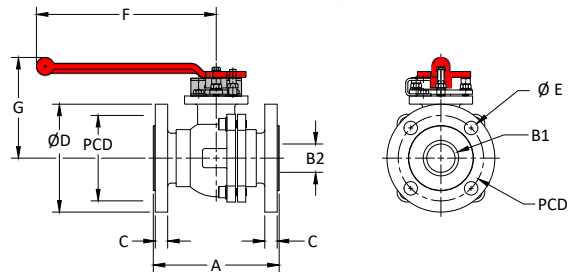
Size	1/2 to 8 inch
Body Type	FF = Flanged Full Port
Body Material	1f = Carbon Steel PFA Lined, Epoxy Coated 6Mf = PFA Lined ASTM A-351 CF8M
Stem / Ball	6ef = 17-4 PH Stainless over molded with PFA
Seats	T = TFM
Packing	PTFE Chevron
Body Bolts	B7 (9.8 or 10.9 zinc plated)
Operator	Handle (1/2 to 4 inch) w/ LOTO, Gear (6 to 8 inch)
Options	VB = Vented Ball for Chlorine Gas service A2 = 18-8 SS Bolting A4 = 316 SS Bolting OH = Oval Handwheel (2 inch & Smaller) Vxx = V-Port Ball (V15, V30, V45, V60, V90)

Example: 4 inch FF-1f 6ef T = 4 inch Flanged Full Port Ball, Carbon Steel Body PFA Lined, 17-4 PH Stem / Ball PFA over molded, TFM Seats, PTFE Packing, B7 Bolts, Handle w/ LOTO

Acris Standard Port Ball Valve Dimensions

Size [In.]	A	B1	B2	C	ØD	PCD	ØE	F	G	Cv	Torque [lb-in]
1	5.00	0.98	0.75	0.67	4.25	3.12	0.63	7.00	4.75	30	135
1 1/2	6.50	1.48	0.98	0.74	5.00	3.88	0.63	7.00	4.75	45	180
2	7.00	1.97	1.48	0.80	6.00	4.75	0.75	10.00	5.40	198	250
3	8.00	3.15	2.56	0.98	7.50	6.00	0.75	12.00	6.60	350	375
4	9.00	3.93	3.15	0.98	9.00	7.50	0.75	12.00	7.00	640	535
6	10.50	5.90	3.93	1.10	11.00	9.50	0.88	12.00	8.20	975	1424

Dimensions are approximate and subject to change.



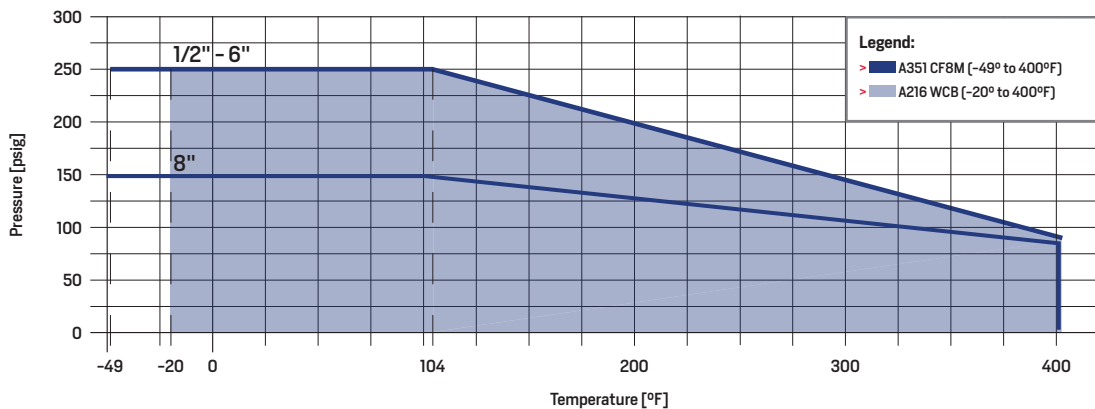
Ordering Information

Ball Standard Port (Floating Ball - Two Piece Ball & Stem)

Size	1 to 6 inch
Body Type	FR = Flanged Standard Port
Body Material	1f = Carbon Steel PFA Lined, Epoxy Coated
Stem/Ball	6ef = 17-4 PH Stainless over molded with PFA
Seats	T = TFM
Packing	PTFE Chevron
Body Bolts	B7 (9.8 or 10.9 zinc plated)
Operator	Handle (1 to 4 inch), Gear (6 inch)
Options	VB = Vented Ball for Chlorine Gas service A2 = 18-8 SS Bolting A4 = 316 SS Bolting OH = Oval Handwheel (2 inch & Smaller)

Example: 3 inch FR-1f 6ef T - A2 = 3 inch Flanged Standard Port Ball, Carbon Steel Body PFA Lined, 17-4 PH SS Stem/Ball PFA over molded TFM Seats, PTFE Packing, 18-8 Bolts, Handle w/ LOTO

PRESSURE/TEMPERATURE DIAGRAM | PFA LINED BALL VALVES



60° V-Port Ball Shown



Amresist[®]
A **Bray** Company

2045 Silber Road
Houston Texas 77055
Tel: 713-682-0000 • Fax: 713-682-0080
sales@amresist.com
www.amresist.com

All statements, technical information, and recommendations in this bulletin are for general use only. Consult your Amresist representative or factory for the specific requirements and material selection for your intended application. The right to change or modify product design or product without prior notice is reserved. Patents issued and applied for worldwide.

Amresist[®] and Acris[®] are registered trademarks of BRAY INTERNATIONAL, Inc.
© 2026 Bray International. All rights reserved.

AR-9001 Acris Ball Valve 3-18-2026